

STFASSADE,
ESTFASSADE

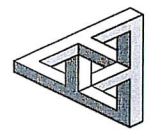
Klaus Ruf
ARCHITEKTUR
GENERALUNTERNEHMUNG

GEMEINDE

NR. 1914 - 7
ST. : 1:100

IM 21.8.2019
GRÖSSE A3
DACHNET RW
DIERT 14.10.2019

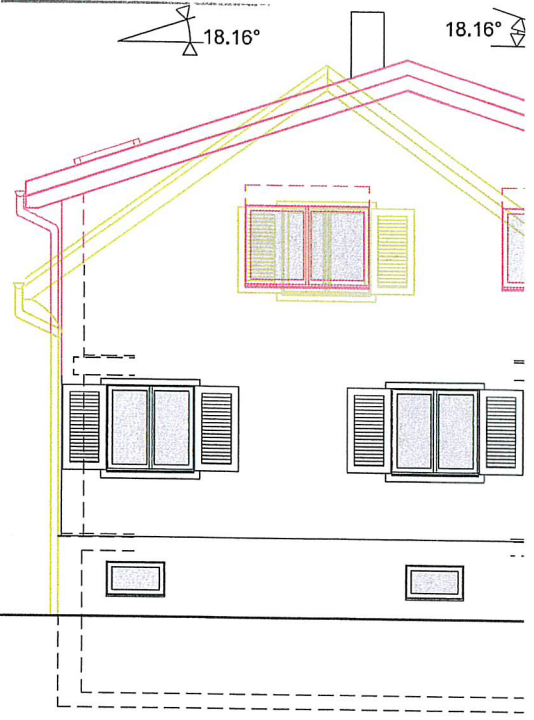
SUHRENMATTSTR. 36
5035 UNTERENTFELDEN
TEL. 062 737 44 36
FAX 062 737 44 37
MOBILE 079 460 83 28
E-MAIL k.ruf@architektur-ruf.ch



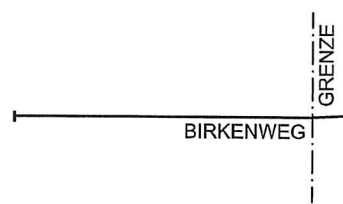
EINGANG
24. Aug. 2022
Bauverwaltung
Oberentfelden

CONTROLLSCHACHT E-40: D = 418.10 m.ü.M. = -1.40
ERDGESCHOSS = ±0.00 = 419.50 m ü.M.

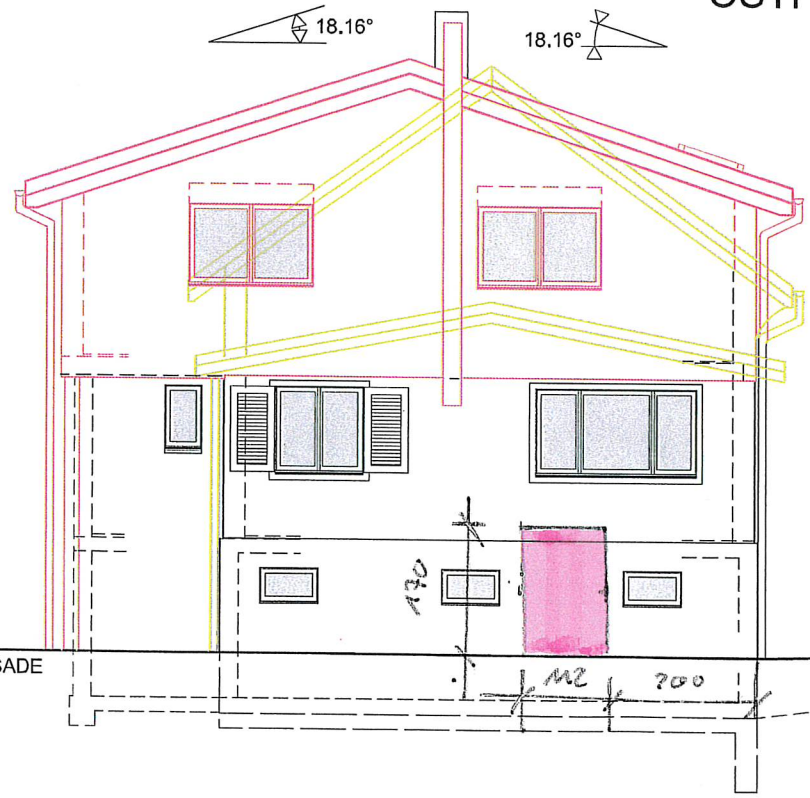
14.10.2019



TERRAIN



OSTFASSADE



BEST. TERRAIN AN HAUSFASSADE

WESTFASSADE

*T. Stammjahn
G. Ehrhard*